



SURE-FAST

INDUSTRIAL FASTENERS

Product Data Sheet

SLEEVE ANCHOR

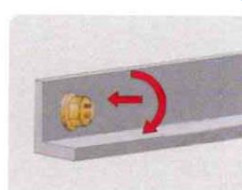
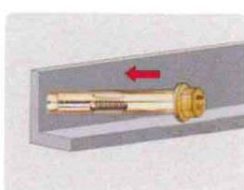
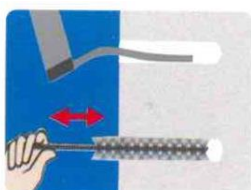
- Preassembled galvanized hex flange nut sleeve anchors can be used in concrete or solid masonry.
- Quick and easy to use.
- Material: Carbon Steel & Stainless Steel.
- Available in Zinc Yellow or Galvanised finish



PRODUCT CODE	ANCHOR SIZE	FASTENER MATERIAL UP TO	QTY PER BOX/CARTON	WEIGHT KGS PER 100 PCS	PULL OUT LOAD (KN) ¹
53020105	M12 x 75	27	50/250	72	17.651

¹ Test values were obtained using C20-C30kgs/cm concrete (no aggregate).

A safe working load should not exceed 25% of stated values.



Disclaimer: Every reasonable effort has been made to ensure that this document is correct at the time of printing. Sure-Fast Industrial Fasteners makes no warranty, expressed or implied, regarding the accuracy of the data or the results to be obtained from the use thereof. The information is supplied solely for your information and consideration and it is the responsibility of the user to comply with all applicable federal, state and local laws and regulations.